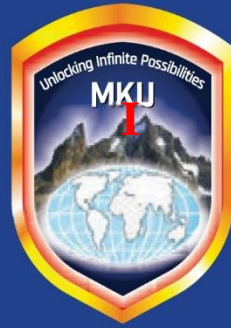


Mount Kenya



University

Unlocking Infinite Possibilities

PROMOTION OF GREEN ENERGY FOR REDUCED INEQUALITIES:
The Case of Mount Kenya University in Eastern Africa Region.
(The UNAI SDG 10 Hub on Reduced Inequalities)

by M. Peter Wanderi and Simon N. Gicharu

An Online Presentation During the 9th Green Energy Investments Forum
- Athens, Greece, on 13th October 2022

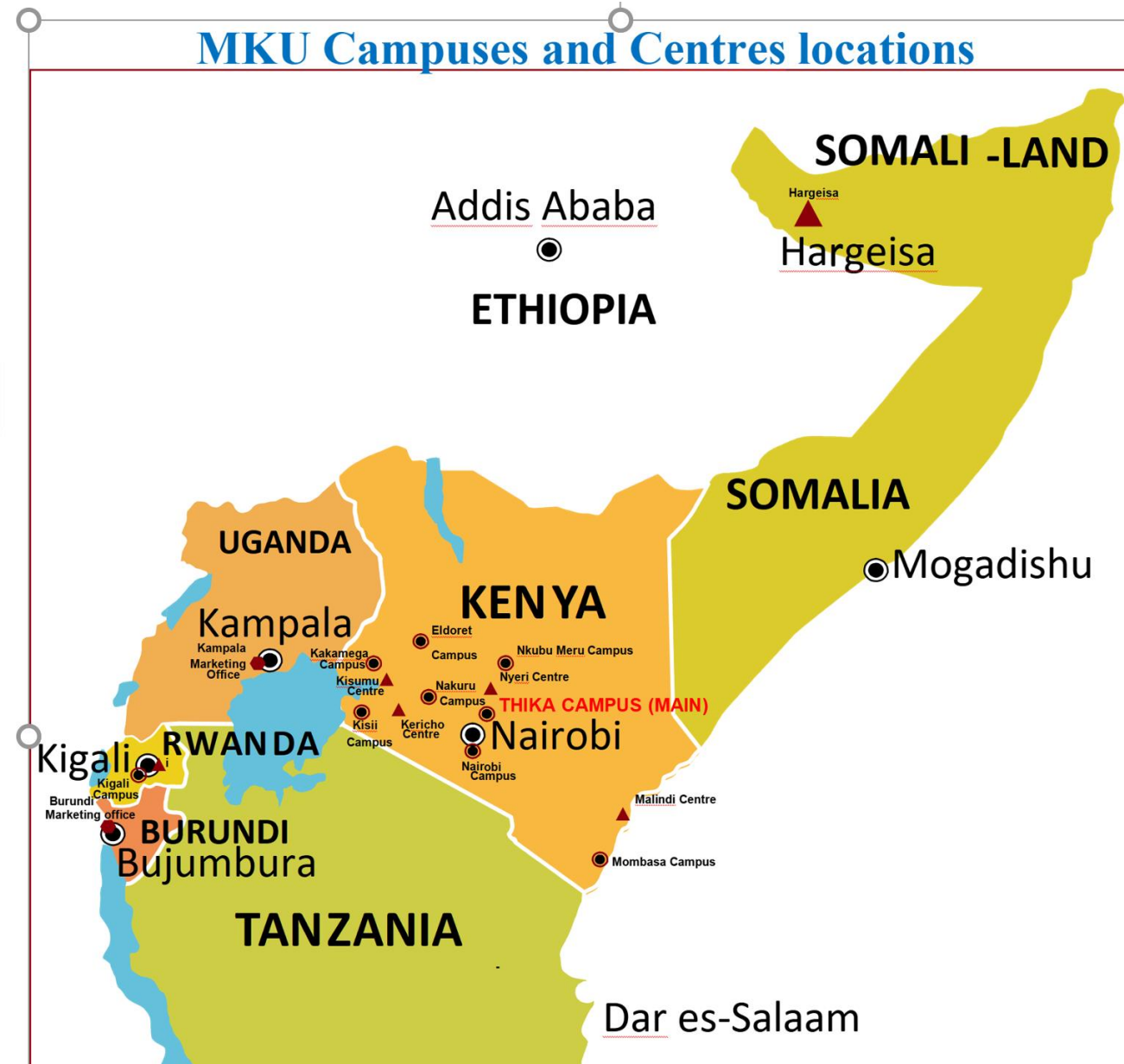
“The Entrepreneurial University in Eastern Africa”



PROF. (DR) SIMON N. GICHARU, CBS

Founder of MKU was inducted into the World Entrepreneurs of the Year Hall of Fame in Monaco, France in 2014 and was Eastern Africa Entrepreneur of the Year in 2014.

**ABOUT MOUNT KENYA
UNIVERSITY (MKU) -**
The Entrepreneurial
University which is a
Chartered and ISO
9001:2015-Certified
institution of higher learning
with a conspicuous presence
throughout the East African
Region.



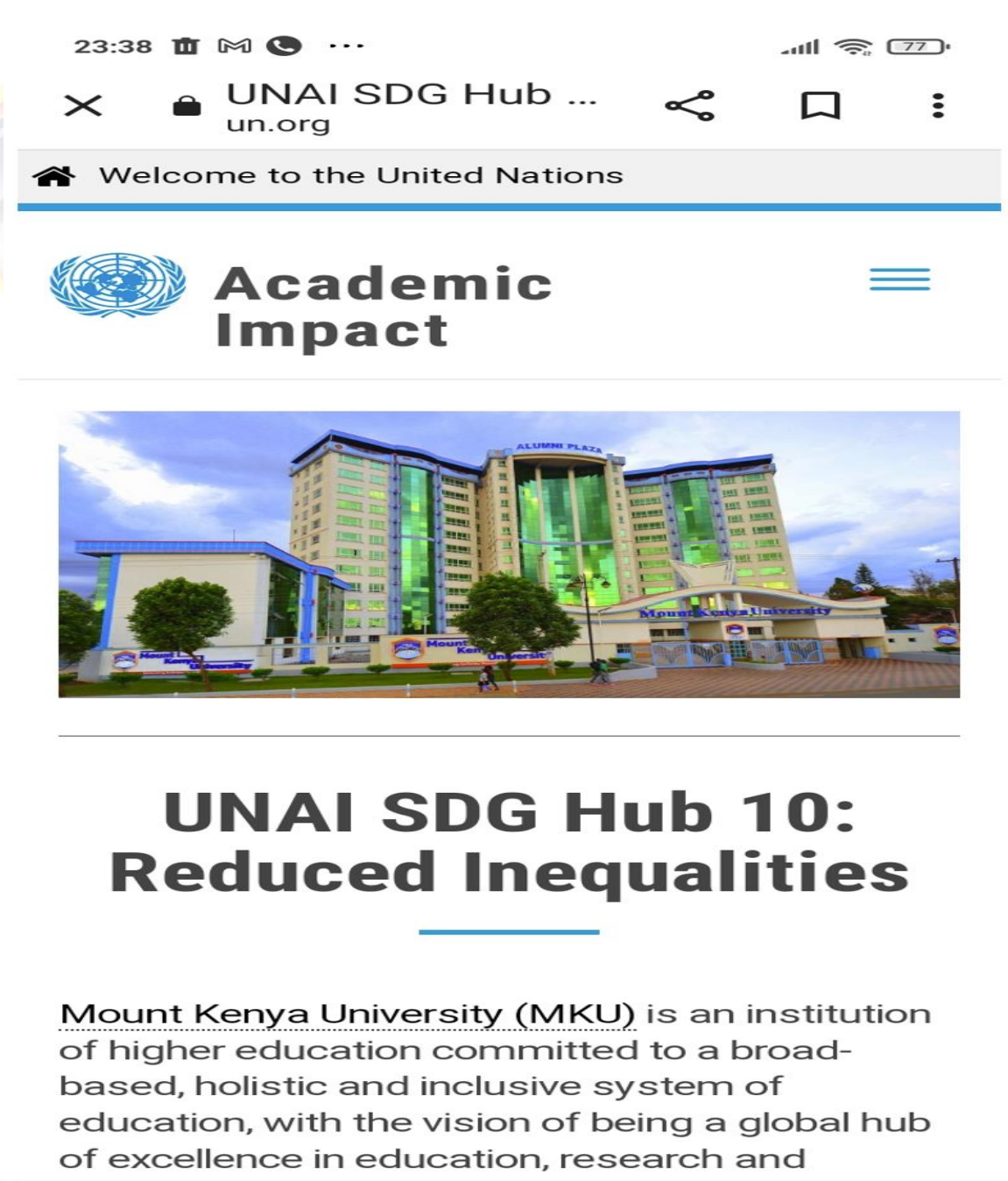
United Nations Academic Impact SDG 10 Reduced Inequalities Hub JUNE 2021 TO MAY 2024


<https://www.un.org/en/academic-impact/unai-sdg-hub-10-reduced-inequalities>

(We support all SDGs for Reduced Inequalities)

This is all about being our Brothers'/sisters' keepers; Public Good


United Nations 
Academic Impact




23:38  ...

UNAI SDG Hub ...
un.org

Welcome to the United Nations

 **Academic Impact**



UNAI SDG Hub 10: Reduced Inequalities

Mount Kenya University (MKU) is an institution of higher education committed to a broad-based, holistic and inclusive system of education, with the vision of being a global hub of excellence in education, research and

**Our overall SDGs 2030 support at MKU UNAI SDG10 Hub on Reduced Inequalities
(supporting all sectors to reduce inequalities)**

ACTIVITIES

1. University Scholarships support (“Education is the most powerful tool to change the world.”(Nelson Mandela, Former South Africa President.)
2. Support to the Persons Living With Disabilities both at the university and out of school(who are referred to within the MKU circles as Persons Enabled Differently)
3. Medical care interventions and human health support especially among the poor community members who would otherwise go without medical support. MKU has a dedicated college of Health Sciences for capacity development in health care
4. Entrepreneurial Promotion amongs recovering drugs and substances addicts.
5. Conferences, eg Peace conference in May 2022, and a Water Summit scheduled for early November 2022 and many other activities

GREEN ENERGY PROMOTION FOR REDUCED INEQUALITIES

Three Masters students from Mount Kenya University won an international grant to distribute solar- powered lanterns to families in Kiandutu slums in Thika

Kiandutu, is largest informal settlement in Thika sub-County, Kiambu County and has a population of about 30,000 people. “Our initial target is 200 homesteads. But we aim to scale it up in due course,” Macharia, one of the grant awardees said.

GREEN ENERGY PROMOTION FOR REDUCED INEQUALITIES

1. My Office as the UNAI SDG 10 Hub on Reduced Inequalities is mandated by an annual Performance Contract and Guided by Strategic Plan 2021 - 2029 to Promote Green Energy

5.3 To promote sustainable Green Energy Enterprise by the Office of the Principal Corporate services and Overseer of the UNAI SDG 10 Hub on Reduced Inequalities							
5.3.1 Develop the Green Energy Enterprise	Develop the Green Energy Enterprise Policy	Approved Policy	Number	1	0	1	A Draft Policy has been developed
	Develop Green Energy Technology Park Proposal	Approved Proposal	Number	1	0	1	In process of finalizing the proposal
	Implement Green Energy in MKU	% in electricity reduction use at MKU & for Community support	%	2	0	5	Arrangements ongoing

GREEN ENERGY PROMOTION FOR REDUCED INEQUALITIES

Rural Electrification & Renewable Energy Corporation in Kenya had its Chairman as Prof. Simon Gicharu for over 8 years (2014 - 2022); He is the Founder of MKU and Chair of the MKU Board of Directors;

Mt Kenya University boss Simon Gicharu reappointed chair of Rural Electrification Authority board

🕒 Sunday, February 10, 2019 at 12:13 PM • by [Muyela Roberto](#)

- The authority (REA) is charged with extending power connections to rural areas with schools being biggest beneficiaries

- Gicharu has served in the same capacity since 2014 after he was moved from Geothermal Development Company

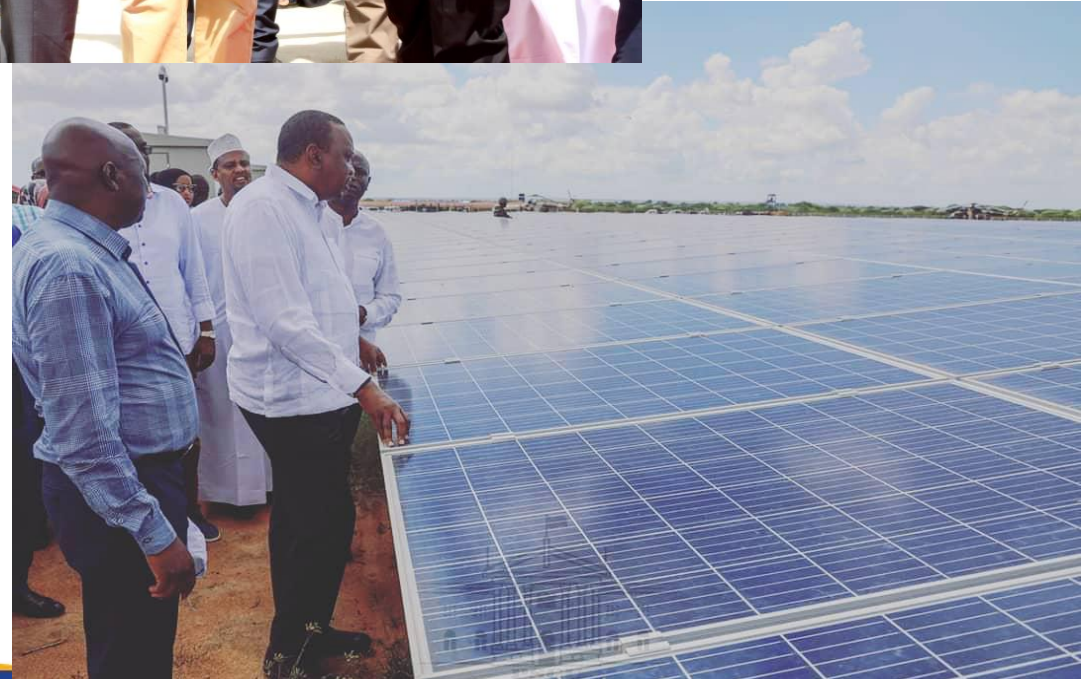
Unlocking Infinite Possibilities

GREEN ENERGY PROMOTION FOR REDUCED INEQUALITIES

President Uhuru Kenyatta being welcomed by the Rural Electrification Authority (REA) Chairman, Prof. Simon Gicharu, (center) as he introduces the REA board members to president, during the inauguration of 50MW Solar Power plant in Garissa county.



The solar farm sits on 85 hectares (210 acres) and consist of 200,200 solar panels the largest in East and Central Africa. □



Unlocking Infinite Possibilities

GREEN ENERGY PROMOTION FOR REDUCED INEQUALITIES

MKU SCHOOL OF ENGINEERING AND BUILT ENVIRONMENT OFFERS COURSES IN GREEN ENERGY

- ☐ Bachelor of Science Energy and Environmental Technology
- ☐ MSC. Renewable Energy and Environmental Engineering

❖ **THANK FOR YOUR ATTENTION**

THE END