



CHRIST
(DEEMED TO BE UNIVERSITY)
BANGALORE | DELHI NCR | PUNE



United Nations
Academic Impact



SUSTAINABLE DEVELOPMENT GOALS

SDG 5 ACTION PLAN BY THE UNIVERSITY AS UNAI SDG 5 HUB CHAIR



Dr. Leena James
Professor & Head SDG Cell
CHRIST University, Bangalore, INDIA
Chair SDG 5 Hub, UNAI

AGENDA

- Introduction & Global Context
- Christ University's Commitment
- SDG 5 Targets & Framework
- Action Plans & Initiatives
- Voices of Equality
- Community Impact
- Global Engagement
- Partnerships & Collaborations
- Research & Capacity-Building
- Achievements & Recognition



SUSTAINABLE DEVELOPMENT GOALS





“Gender equality is more than a goal in itself. It is a precondition for meeting the challenge of reducing poverty, promoting sustainable development and building good governance.”

- Kofi Annan

Key Global Statistics

75
million

0
million

million

Almost 750 million women and girls alive today were married before their 18th birthday.

24

percent

Only 24 percent of national parliamentarians were women as of November 2018, a small increase from 11.3 percent in 1995.

2

of 3

Two thirds of developing countries have achieved gender parity in primary education.

Source - UNDP



Key Global Statistics



77

cents

Women earn only 77 cents for every dollar that men get for the same work.

1

in 3

35 percent of women have experienced physical and/or sexual violence.

13

percent

Women represent just 13 percent of agricultural landholders.



Key Global Statistics

- The latest global gender data show uneven progress across SDG-5 targets; women still hold roughly one in four parliamentary seats worldwide (example of slow political empowerment).

[UNSD](#)

- The Global Gender Gap Report continues to show persistent gaps across economic participation, political empowerment and health — use the 2024 report’s headline figures and chart for “distance to parity.”

[World Economic Forum](#)

- UN/UN Women data and snapshots (2024–2025) emphasise new threats (e.g. automation/AI risks to women’s jobs) and persistent vulnerabilities — good to cite when arguing urgency.

[UN Women](#)





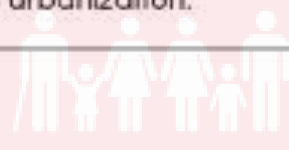
SUSTAINABLE DEVELOPMENT GOALS

SDG 5

Gender equality is central to the SDGs, and if it is not achieved, the implementation of all the goals will be compromised.

SDG 11

Women have equal rights to the city, and their safety in public spaces is crucial for sustainable urbanization.



2 ZERO HUNGER

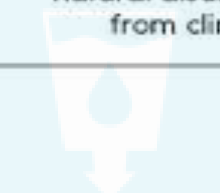


5 GENDER EQUALITY



6

Unsustainable production and consumption patterns are gendered, with women suffering disproportionately from resource scarcity and natural disasters resulting from climate change.



SDG 7

As primary energy managers in households, women can play a powerful role in the successful transition to sustainable energy for all.



8 DECENT WORK AND ECONOMIC GROWTH



9 INDUSTRY, INNOVATION AND INFRASTRUCTURE



GENDER EQUALITY



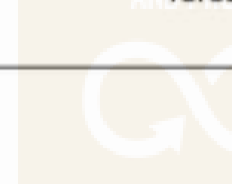
10 REDUCED INEQUALITIES



12 RESPONSIBLE CONSUMPTION AND PRODUCTION



15 LIFE ON LAND



SDG 15

Women's specific knowledge of and dependence on forests makes them key contributors to forest conservation and regeneration.



SDG 6

Women and girls play a central role in the provision, management and safeguarding of household water and sanitation.



6 CLEAN WATER AND SANITATION



15 LIFE ON LAND



16 PEACE, JUSTICE AND STRONG INSTITUTIONS



17 PARTNERSHIPS FOR THE GOALS



12 RESPONSIBLE CONSUMPTION AND PRODUCTION



SDG 17

Mobilizing sufficient resources will be critical for meeting the gender equality commitments of the 2030 Agenda.



TURNING PROMISES INTO ACTION.

GENDER EQUALITY TARGETS AND INDICATORS

Gender Equality : Targets and Indicators



5.1

End all forms of discrimination against women and girls everywhere.



5.4

Recognize and value unpaid domestic work through providing more support in public services and policies, and promoting shared responsibility within the household and the family.



5.2

Eliminate all forms of violence against all women and girls.

Proportion of women and girls facing sexual violence

5.5

Ensure women's full and effective inclusion in leadership positions in political, economic, and public life.

Proportion of seats held by women in governments;
Proportion of women in managerial positions

5.3

Eliminate all harmful practices, such as child, early and forced marriage.

5.6

Ensure universal access to sexual and reproductive health and reproductive rights.

Key Findings and Challenges

Progress on SDG 5 has been slow and uneven, with urgent action needed in the final years before the 2030 deadline.

By 2025, none of the targets for SDG 5 have been fully met, and projections indicate it will take 300 years to end child marriage at the current rate.

Significant gaps remain in areas such as:

- **Discrimination:** Legal barriers continue to restrict women's employment and leadership opportunities.
- **Violence:** Violence against women, including trafficking and exploitation, remains a serious concern.
- **Harmful Practices:** Child marriage and female genital mutilation (FGM) continue to deprive girls of their agency and harm their health.
- **Unpaid Care Work:** Women disproportionately carry the burden of unpaid domestic and care work, limiting their participation in other spheres.
- **Political Representation:** Women face barriers to full participation and leadership in political and public life



- At Christ University, our efforts to achieve the Sustainable Development Goals (SDGs) are deeply rooted in education, research, and community engagement.
- Through the SDG Cell, we organize seminars, workshops, and outreach programs to foster awareness and action on global challenges.
- Initiatives like the Integrated Slum Development Programme, recycling units, environmental sustainability projects, and collaborations with industries for experiential learning exemplify our commitment.
- We celebrate UN Days, promote student volunteerism, and embed sustainability into curricula, encouraging hands-on R&D in green technologies.
- By integrating the SDGs into academics and community development, we empower individuals and create innovative solutions for a sustainable future, staying true to our holistic education and societal transformation mission.

Key Highlights



- **100+ events (university + departmental).**
- **2,5000+ students directly engaged.**
- **12+ departments participated in SDG initiatives.**
- **75+ community partnerships; CSA active in 137 villages.**
- **1,250 saplings distributed via community programs.**
- **900 families received vegetable seeds for nutritional kitchen gardens.**
- **1,280 children received free tuition (supplementary education centres)**

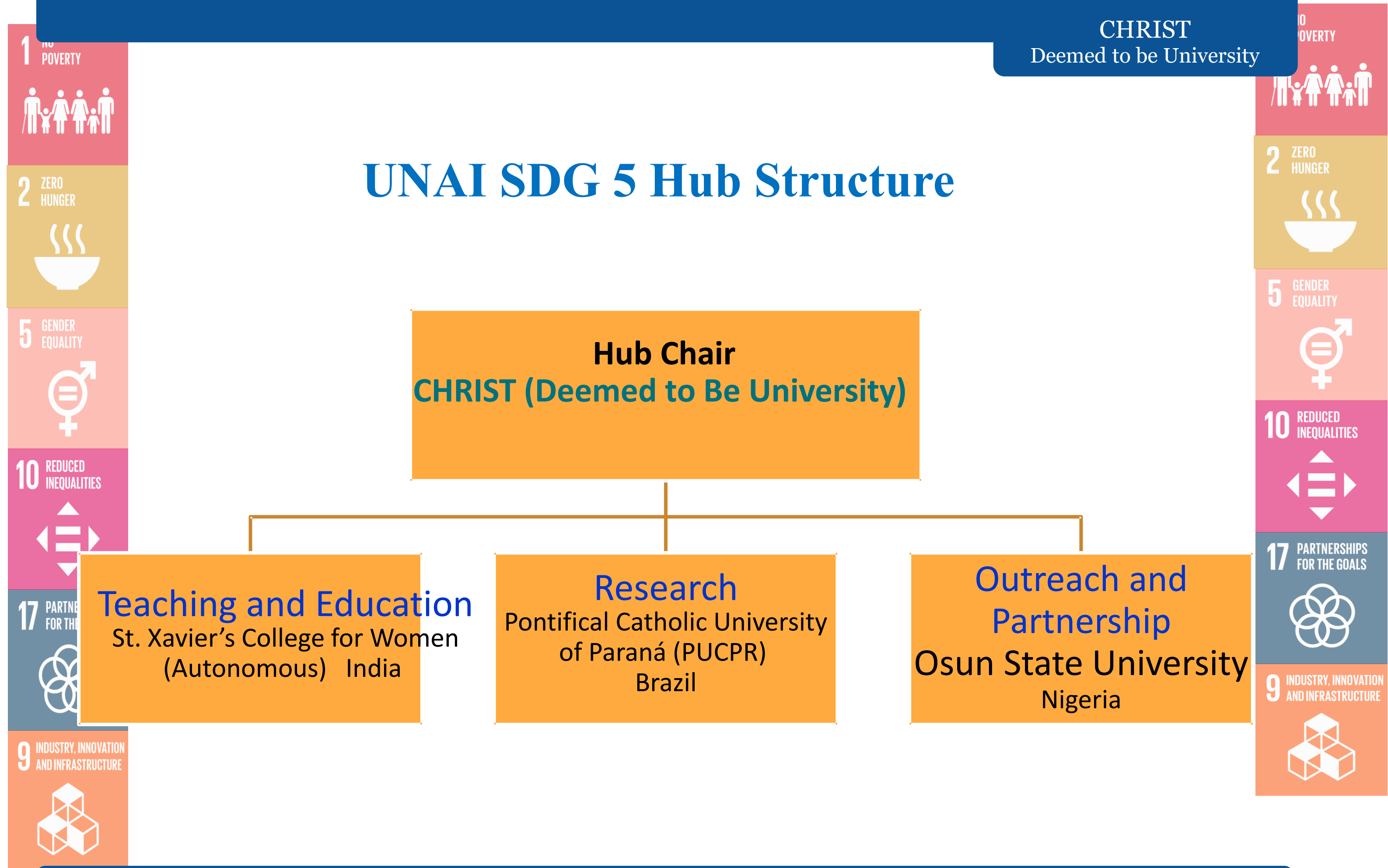
Vision

Advance a globally recognized academic environment where gender equality and women's empowerment shape leadership, research, and pedagogy.

Mission

- Mainstream gender into curriculum & research.
- Build leadership pathways for women in academia.
- Drive community partnerships and policy advocacy.

UNAI SDG 5 Hub Structure



SDG 5 Targets & University Impact

Key Targets for Universities:

- **Target 5.1:** End discrimination
- **Target 5.2:** Eliminate violence
- **Target 5.5:** Equal leadership participation
- **Target 5.b:** Technology empowerment

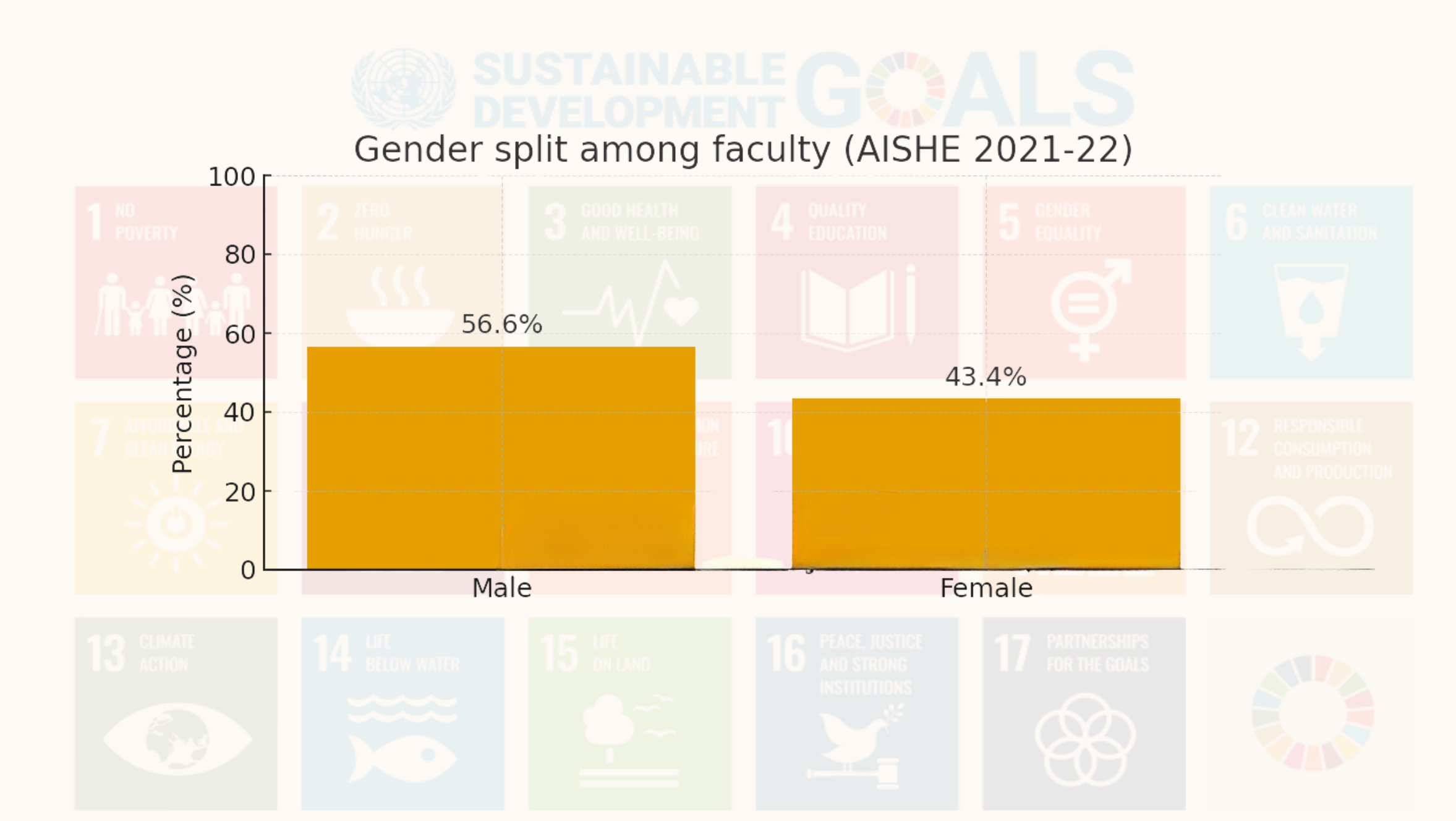
Why Universities Matter:

- Train 57% of global graduates (women)
- Influence future leaders
- 15% higher research output in balanced institutions



| | | |
|---|--|---|
| <p>TARGET 5.1</p> <p>END DISCRIMINATION AGAINST WOMEN AND GIRLS</p> | <p>TARGET 5.2</p> <p>END ALL VIOLENCE AGAINST AND EXPLOITATION OF WOMEN AND GIRLS</p> | <p>TARGET 5.3</p> <p>ELIMINATE FORCED MARRIAGES AND GENITAL MUTILATION</p> |
| <p>TARGET 5.4</p> <p>VALUE UNPAID CARE AND PROMOTE SHARED DOMESTIC RESPONSIBILITIES</p> | <p>TARGET 5.5</p> <p>ENSURE FULL PARTICIPATION IN LEADERSHIP AND DECISION-MAKING</p> | <p>TARGET 5.6</p> <p>UNIVERSAL ACCESS TO REPRODUCTIVE HEALTH AND RIGHTS</p> |
| <p>TARGET 5.A</p> <p>EQUAL RIGHTS TO ECONOMIC RESOURCES, PROPERTY OWNERSHIP AND FINANCIAL SERVICES</p> | <p>TARGET 5.B</p> <p>PROMOTE EMPOWERMENT OF WOMEN THROUGH TECHNOLOGY</p> | <p>TARGET 5.C</p> <p>ADOPT AND STRENGTHEN POLICIES AND ENFORCEABLE LEGISLATION FOR GENDER EQUALITY</p> |

Current Status: 2025 Baseline



Four-Pillar Strategic Framework



Leadership & Governance

40% women in decision-making roles



Academic Excellence

STEM pipeline & research equity



Campus Safety

Zero-tolerance harassment policies



Student Success

Equal opportunities across programmes



Leadership & Governance Action Plan



01

Audit Leadership

Current gender distribution

02

Set Targets

Atleast 60% women by 2027

03

Create Committee

Executive authority

Investment: \$1.5M over 3 years

Key Initiatives:

- Women's Leadership Programme
- Bias-free recruitment
- Annual salary audits
- Succession planning

CHRIST UNIVERSITY : APPROCHES

A stylized green tree with a brown trunk and a canopy of rounded green leaves.

RESEARCH AND
PUBLICATION

A stylized green tree with a brown trunk and a canopy of rounded green leaves.

EXTERNAL
COLLABORATIONS

A stylized green tree with a brown trunk and a canopy of rounded green leaves.

TEACHING AND
LEARNING

A stylized green tree with a brown trunk and a canopy of rounded green leaves.

TRAINING AND
CAPACITY BUILDING

A stylized green tree with a brown trunk and a canopy of rounded green leaves.

CAMPUS OPERATIONS

A stylized green tree with a brown trunk and a canopy of rounded green leaves.

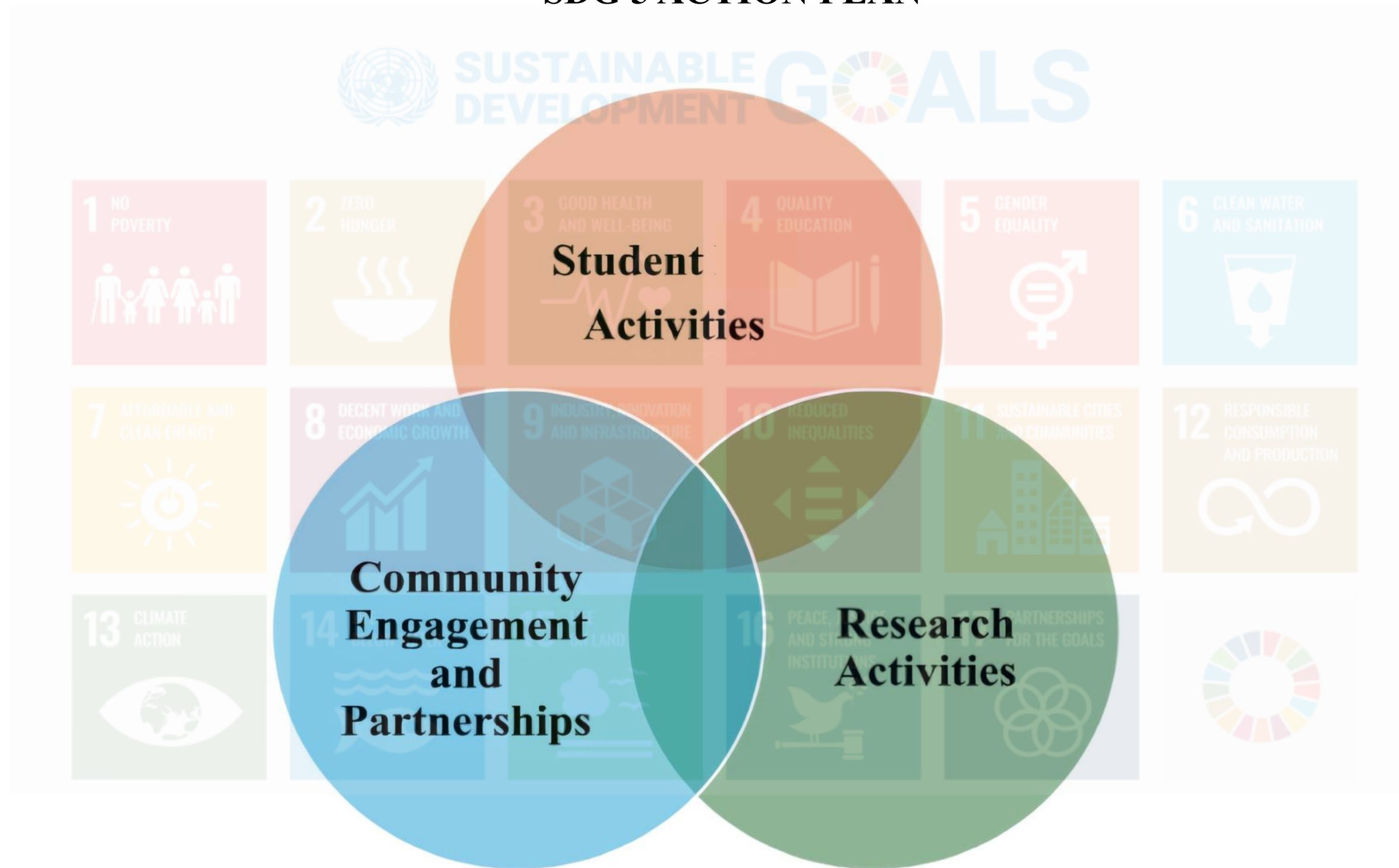
LEADERSHIP AND
GOVERNANCE

A stylized green tree with a brown trunk and a canopy of rounded green leaves.

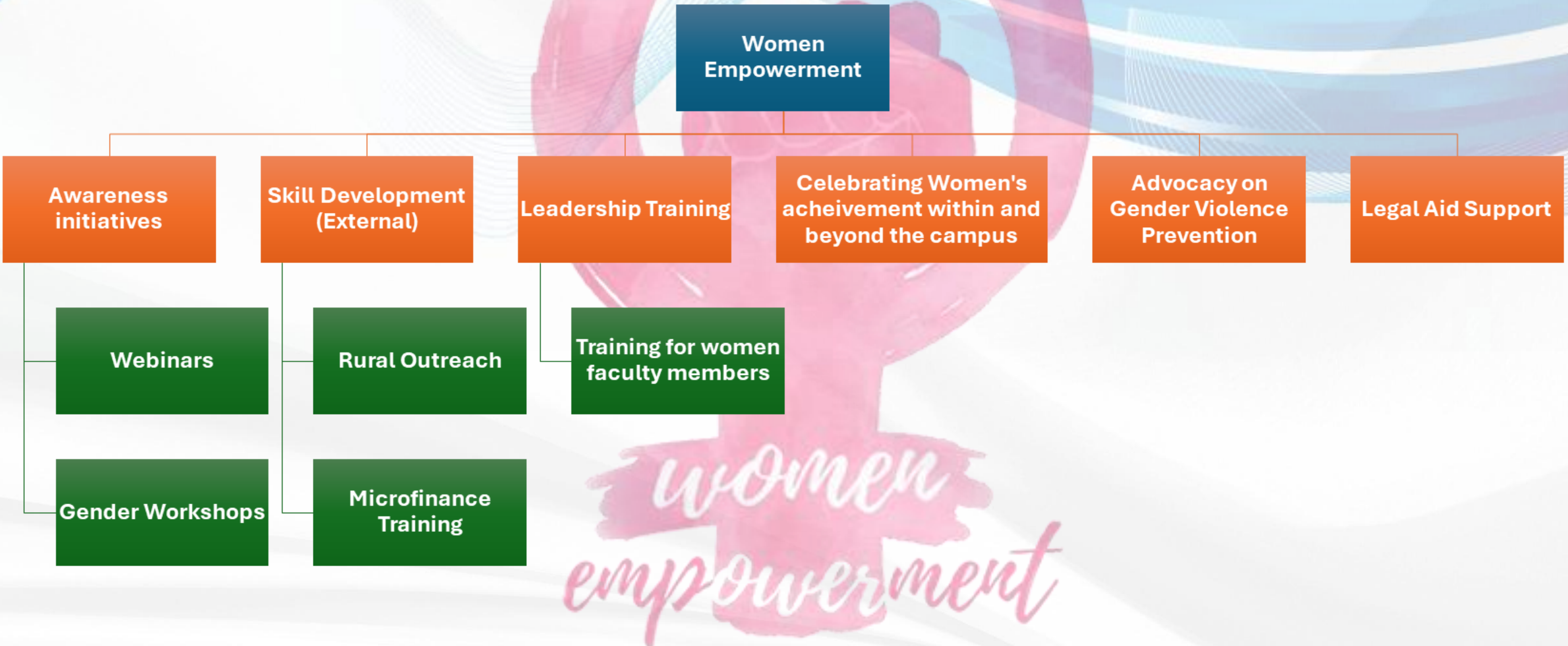
SOLVING COMMUNITY
PROBLEMS



SDG 5 ACTION PLAN

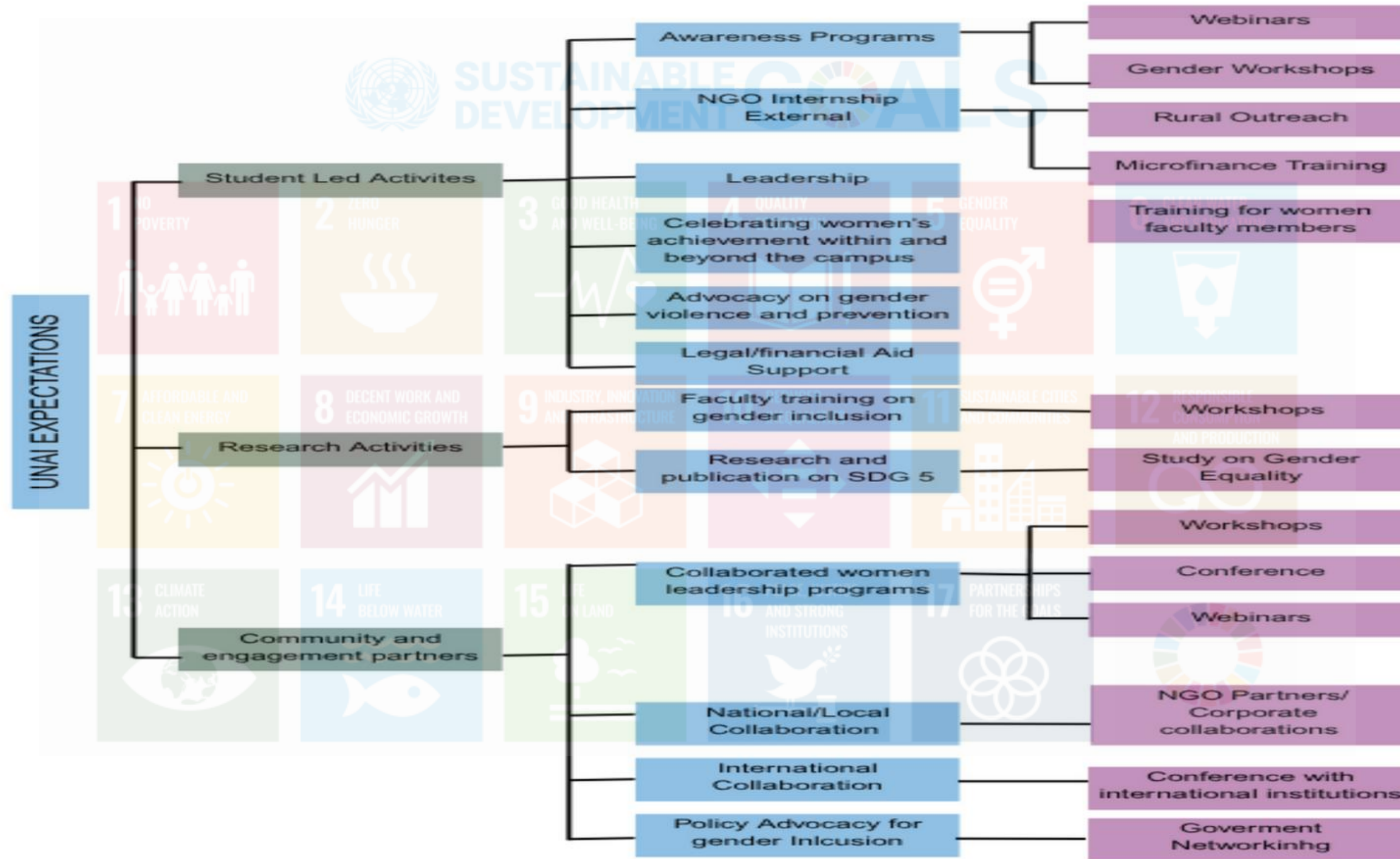


WOMEN EMPOWERMENT: LINK BETWEEN UNAI EXPECTATION AND OUR ACTIONS





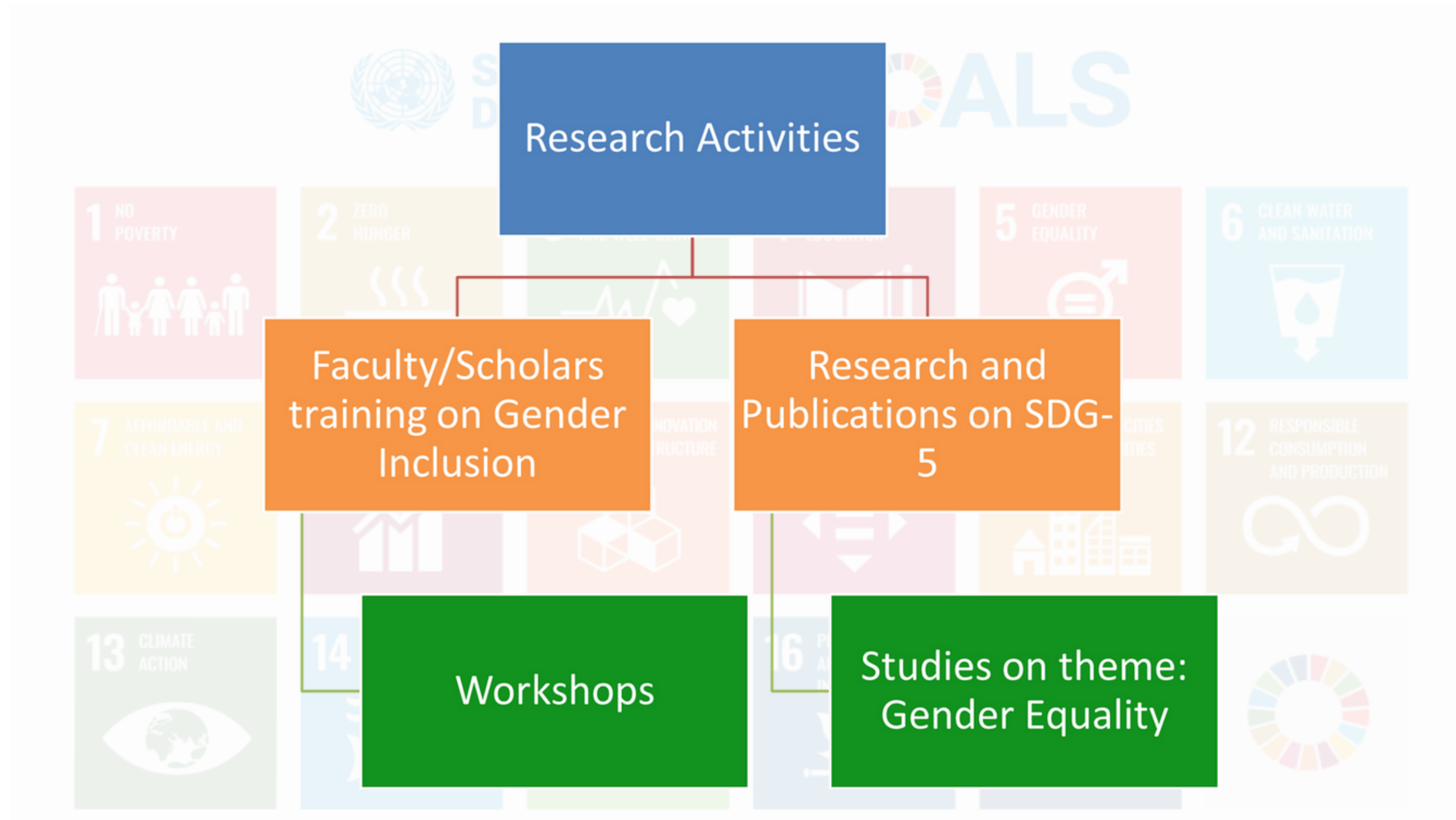
SDG 5 ACTION PLAN



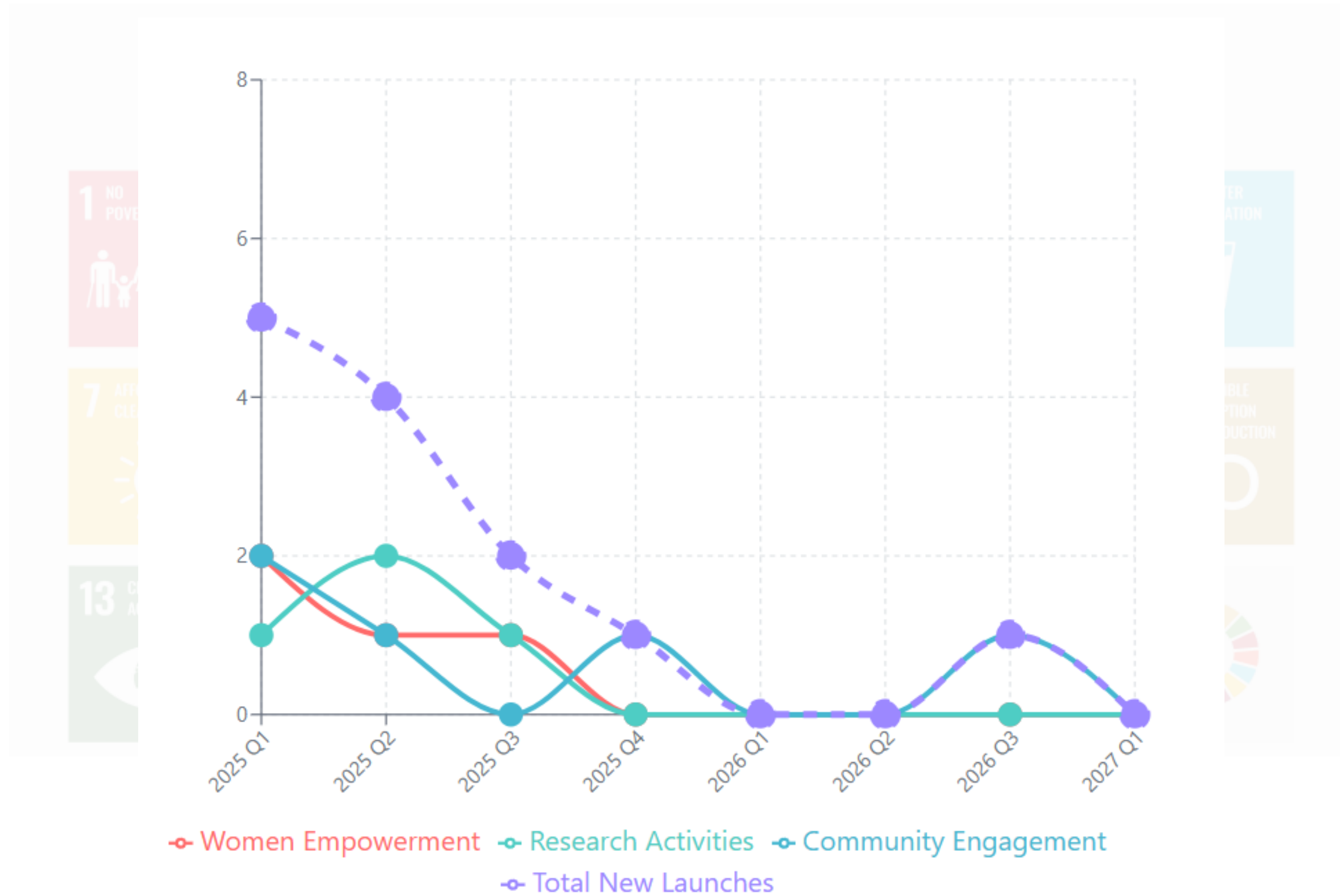
SDG 5 ACTION PLAN



SDG 5 ACTION PLAN



SDG 5 ACTION PLAN



Major Student Activities: events & flagship programs

- ISS Bootcamp
- IGEN GreenDay , 1,000+ participants - IGEN SDG Award.
- Voices Of Equality
- Fireside Chat
- Netritva
- Sustainability Week / TATTVA & Intl. Women’s Day.



VOICES OF EQUALITY



- Theme: A dialogue-driven event aimed at fostering conversations on gender equality, inclusion, and empowerment.
- Purpose: To foster dialogue and reflection on challenges and opportunities in creating a more just society.
- Format: Interactive discussions and sharing of diverse perspectives.
- Participants: Students, academicians, NGOs, corporate leaders, policy makers, UN bodies and thought leaders.
- Outcome: A platform to amplify voices and strengthen collective commitment to equality.

FOCUS GROUP DISCUSSION - VOICES OF EQUALITY



- Collaboration Beyond Stage: Informal, open exchange enabled equal participation and actionable connections.
- Mutual Value: Students gained mentorship; professionals gained fresh perspectives.
- Core Outcome: Shared knowledge, future collaborations, and renewed collective purpose.
- Key Takeaway: Gender equality = basic right + catalyst for progress.
- Action Points: Break stereotypes, empower women leaders, embed equality daily.

Community impact

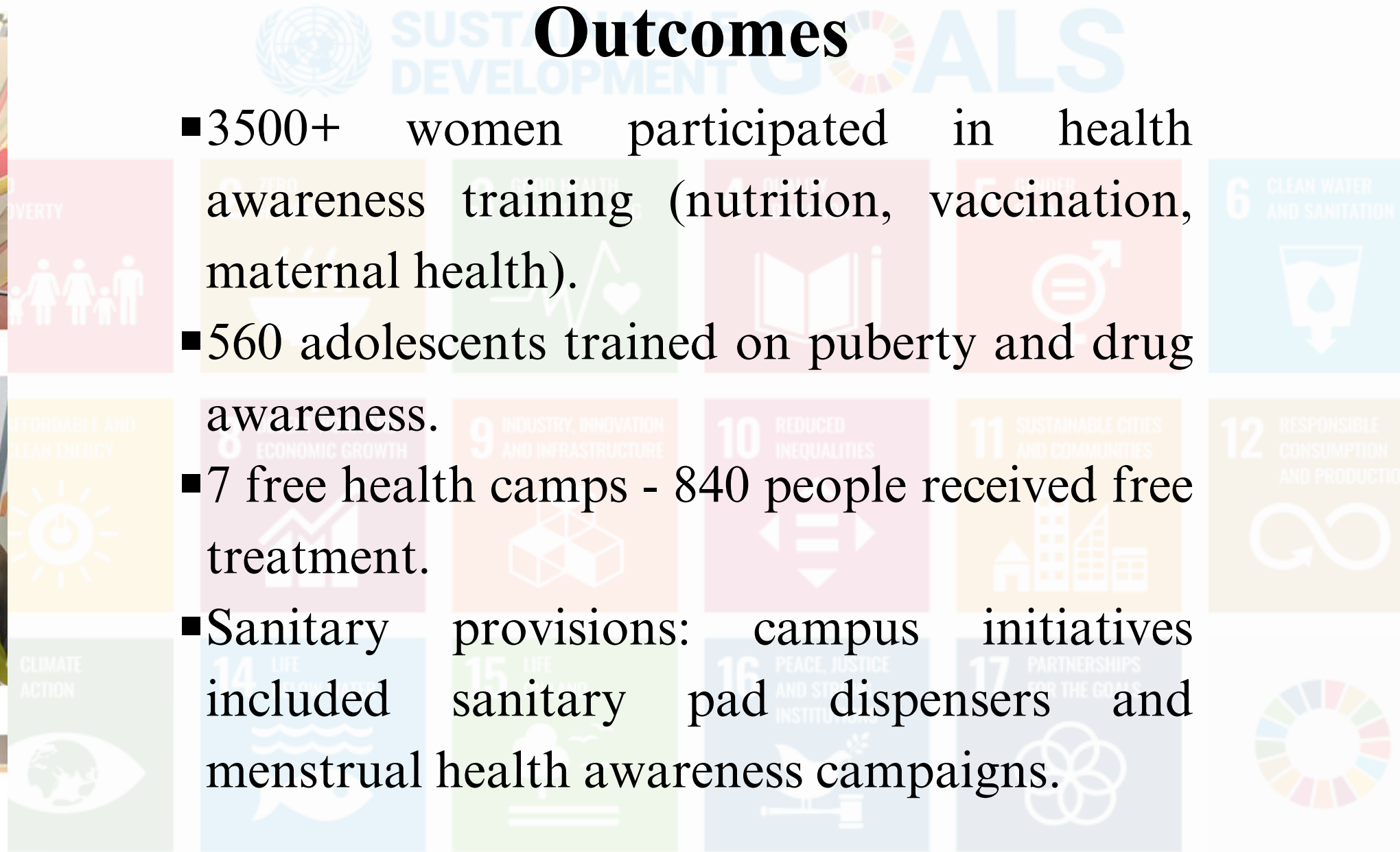
- CSA reaches 137 villages across Karnataka, Kerala, Maharashtra, NCR and Chhattisgarh.
- 40 children trained in Sneha Gram service-learning; 250 children under Srujana project trained in English.
- 850 children benefit annually from volunteer programmes; 900 families got seeds; 520 children received educational materials.



Health & Women-Focused

Outcomes

- 3500+ women participated in health awareness training (nutrition, vaccination, maternal health).
- 560 adolescents trained on puberty and drug awareness.
- 7 free health camps - 840 people received free treatment.
- Sanitary provisions: campus initiatives included sanitary pad dispensers and menstrual health awareness campaigns.



ISS BOOT-CAMP

- A dynamic one week program featuring real-world climate challenges, idea generation, and solution design in collaboration with peers from multiple disciplines.
- Direct mentorship from sustainability leaders and experts from across the world, providing invaluable insights into climate innovation.
- Over 50 internships, climate-tech positions, and global fellowships are offered to participants, expanding career pathways in sustainability.
- Exclusive access to pre-incubation programs, fellowships, and international certifications, fostering future entrepreneurs and changemakers.
- Students from diverse fields (engineering, law, business, etc.) worked together to innovate and tackle global climate challenges.
- Focused not just on the competition, but also on nurturing long-term growth with continued mentorship, startup support, and global impact.

Top participants received fully funded scholarships to represent India at the ASEAN-China-India Youth Leadership Summit in Singapore.



Partnerships & collaborations



GOOD HEALTH AND WELL-BEING



CLEAN WATER AND SANITATION



Dept. Women & Child Welfare
Govt. of Karnataka



BOSCH



DE MONTFORT UNIVERSITY LEICESTER

UNICEF (POC Sonykutty George), De Montfort University (Dr Manjeet), Osun State University (Dr John), Pontifical Catholic University of Paraná (Dr Danniell Anne), Karnataka State Commission for Women (event partner), Bosch Ltd (skill development), Tag For Change, Actions We Empower, TERI, The Future Founders Co.

Research, Curriculum & Capacity Building (concrete actions)

Curriculum

- Integrate SDG-5 modules into UG/PG courses and PhD perspectives.
- Gender-sensitisation workshops embedded into orientation programs.

Research

- Launch an SDG-aligned research cluster on gender equality.
- ICSSR National Conference (Dec 2025) → outputs to be published in a Scopus/T&F Special Issue

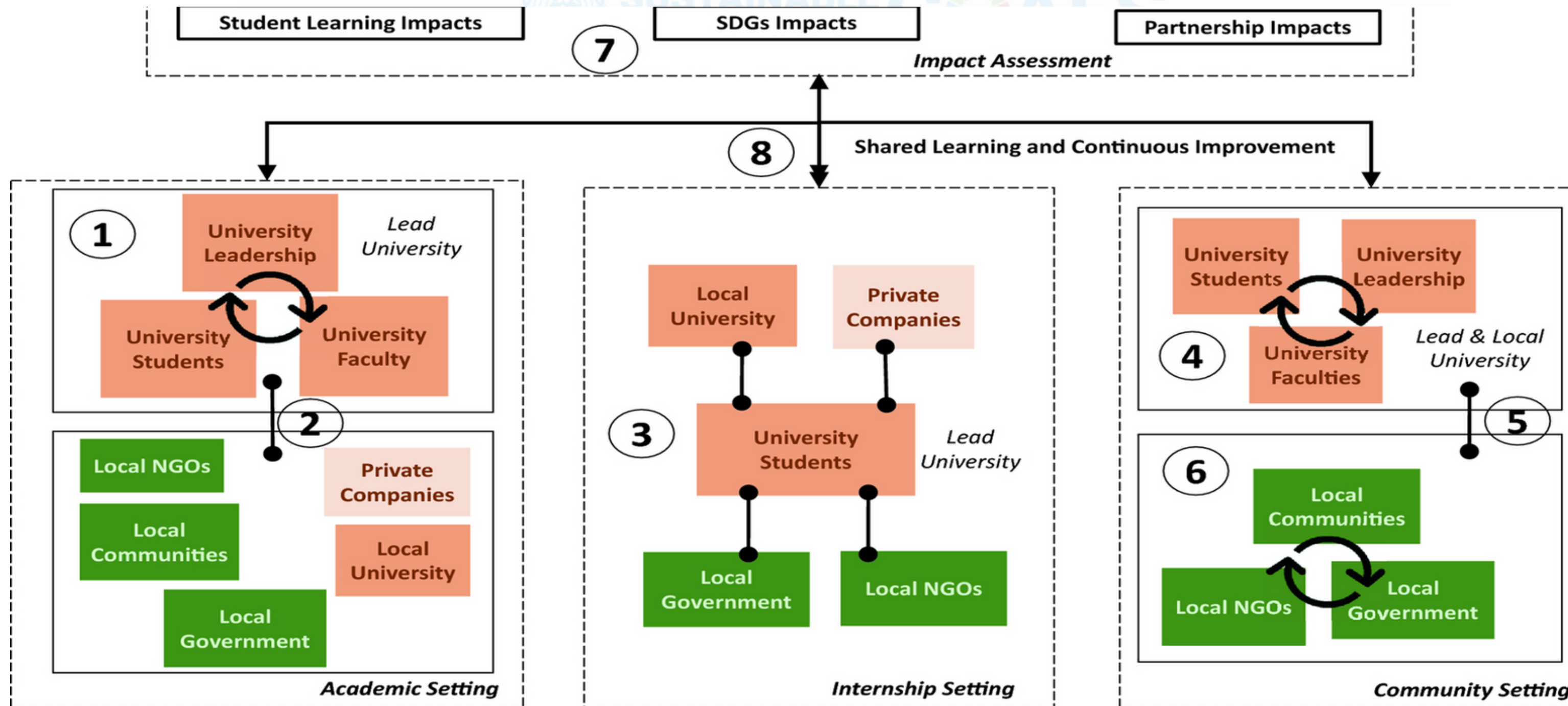
Capacity-Building

- Seed grants for student & faculty-led gender projects.
- POSH training for final-year students in Law, Social Sciences, Management, and STEM

What We Want From Hub Chairs / Partners

- Monitoring & evaluation partner (request partner university/NGO to co-develop pre/post survey instrument for SAMATVA toolkit).
- 3 hub partners to pilot SAMATVA toolkit across 5 campuses each in 2026.
- Seed funding for: longitudinal impact study of Hakki Pikki & Shanti Nagar community projects.
- Research collaboration to convert ICSSR conference outputs into a Scopus-indexed special issue (T&F).

A working model of university-led human-centred design and shared-action learning processes to solve SDG challenges.



Note: The steps (shown as numbers in the figure) are explained in the text and in Table 2

STEPS TO MOVE FORWARD

1. AWARENESS
CREATION



2. SDG 5 POLICY
FRAMING



3. ADVISORY
BOARD



4. CAPACITY BUILDING
TRAINING PROGRAMS



5. RESEARCH SCHOLARS
TRAINING IN COLLABORATION
WITH CENTER FOR RESEARCH



6. WOMEN LEADERSHIP
AWARD



7. DOCUMENTATION
AND REPORTING



8. FUNDING FROM
FINANCE OFFICE
/BUDGETING



9. COLLABORATION
WITH VICECHAIRS



Achievements & Recognition



Christ University's "Voices of Equality" event, held under the UNAI Global SDG 5 Hub Chair, sparked powerful intersectoral conversations on gender equality and inclusive leadership.

Christ University Hosts National Dialogue on Gender Empowerment

BENGALURU

Christ University's Central Campus served as the epicenter of a dynamic national-level dialogue on gender empowerment through its flagship event, "Voices of Equality." Organized under the United Nations Academic Impact (UNAI) Global SDG 5 Hub Chair, the event convened leaders from diverse sectors — corporations, NGOs, academia, and civil society — to accelerate efforts toward Sustainable Development Goal 5: Gender Equality. The program was graced by Reverend Dr. Father Jossy George, Director of the Bannerghatta Road Campus, and Dr. Leena James, UNAI SDG 5 Hub

Chair. Dr. Leena James emphasized that the initiative champions collective advocacy for dignity, inclusion, and equal respect: "Every voice counts. This platform envisions a world where no one is left behind, irrespective of gender." Fr. Jossy George's opening remarks featured a compelling video on women's underrepresentation in politics. "Gender equality is not a women's issue — it's a human issue," he noted. Activist Ms. Brinda Adige, delivering the keynote, reaffirmed that equality is a constitutional right, not a concession. "When women lead, decisions are more inclusive and compassionate," she said. India's first woman

IPS officer from South India, Smt. Jija Hari Singh, reflected on breaking patriarchal barriers. "Women don't need permission to exist. They have free will," she stated.

A vibrant panel discussion, moderated by Dr. Jyoti Kumar, featured voices such as Majid Ali Khan, Priya Varadarajan, Parimala Narayanan, Kanchan Dwivedi, Natasha Shirazi, and Sujatha Ramani, all echoing the urgency for equity across institutions and communities. The event concluded with a Q&A and breakout group discussions, yielding actionable strategies to strengthen gender justice frameworks.

Achievements & Recognition



Maternal Health Awareness Campaign



Establishment of Pure Drinking Water Plant by Christ University



Cleanliness Drive



Environmental Awareness Campaign



Plantation Drive



Leave no one behind

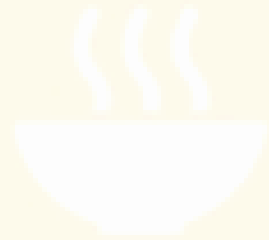
WITHOUT ACTION, IT'S JUST A
SLOGAN



1 NO POVERTY



2 NO HUNGER



3 GOOD HEALTH



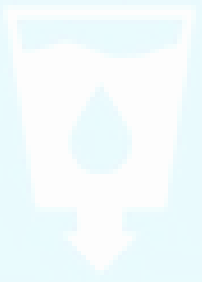
4 QUALITY EDUCATION



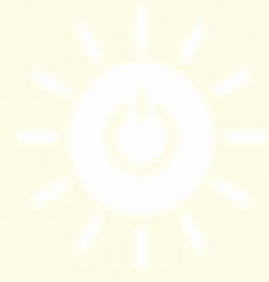
5 GENDER EQUALITY



6 CLEAN WATER AND SANITATION



7 CLEAN ENERGY



8 GOOD JOBS AND ECONOMIC GROWTH



9 INNOVATION AND INFRASTRUCTURE



10 REDUCED INEQUALITIES



11 SUSTAINABLE CITIES AND COMMUNITIES



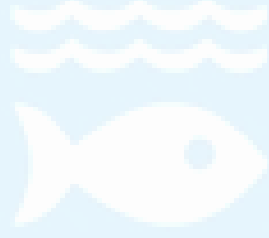
12 RESPONSIBLE CONSUMPTION AND PRODUCTION



13 CLIMATE ACTION



14 LIFE BELOW WATER



15 LIFE ON LAND



16 PEACE AND JUSTICE



17 PARTNERSHIPS FOR THE GOALS

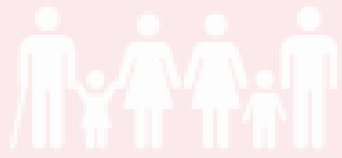


THE GLOBAL GOALS

ANY QUESTIONS



1 NO POVERTY

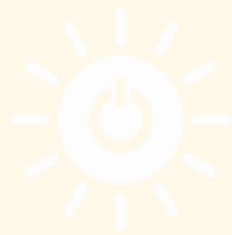


6 CLEAN WATER AND SANITATION



leena.james@christuniversity.in

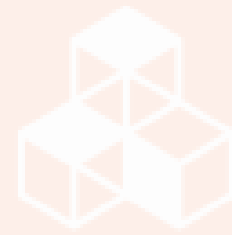
7 AFFORDABLE AND CLEAN ENERGY



8 DECENT WORK AND ECONOMIC GROWTH



9 INDUSTRY, INNOVATION AND INFRASTRUCTURE



10 REDUCED INEQUALITIES



11 SUSTAINABLE CITIES AND COMMUNITIES



12 RESPONSIBLE CONSUMPTION AND PRODUCTION



13 CLIMATE ACTION



14 LIFE BELOW WATER



15 LIFE ON LAND



16 PEACE, JUSTICE AND STRONG INSTITUTIONS



17 PARTNERSHIPS FOR THE GOALS

